

A red violin is the central focus, lying on its side on a sandy beach covered with small, smooth pebbles. The background is a soft-focus view of the ocean and a cloudy sky. The violin's body is a vibrant red, and its f-hole and scroll are clearly visible.

# Southwold concert series

The Season  
2010 - 2011

Nathan Williamson  
Artistic Director

Patrons

The logo for 'Spring' features a stylized green leaf-like shape above the word 'spring' in a lowercase, teal-colored sans-serif font.

spring

Sponsors

The logo for 'ADNAMS SOUTHWOLD' features the word 'ADNAMS' in a large, blue, serif font with a slight shadow effect, and 'SOUTHWOLD' in a smaller, blue, sans-serif font below it.

ADNAMS  
SOUTHWOLD

# Everything you love

about London agencies.

(Except the ego, the attitude and the expense.)



Southwold isn't the most obvious location for a world-class marketing agency - but at Spring we see no such boundaries.

Our client list includes leading brands like Bollinger, Dent, Nursey, Belvoir and Bury's Theatre Royal.

Across all media, from advertising and design to digital marketing and PR, Spring applies rigorous strategic thinking and uncompromised creativity to get real-world results.



If you'd like to work with an agency that makes it happen - wherever you are - please call Erika on **01502 726 161** or email [erika@springadvertising.co.uk](mailto:erika@springadvertising.co.uk)

springadvertising.co.uk



Southwold  
concert series

## Welcome To the second Southwold Concert Series

It gives me great pleasure to introduce the second season of the Southwold Concert Series. It is only a short time since we started exploring the possibilities of regular musical events in Southwold but already the concerts seem to have become a part of the everyday life of the town, which is just what we hoped they would be.

This season comprises a total of seven concerts spread throughout the year. Among the young artists we have performing are the Amsterdam Chamber Soloists, an outstanding ensemble from Holland making their UK debut, the highly acclaimed Barbirolli Quartet, and leading young cellist Alexander Somov.

It is also a great pleasure to have some familiar faces returning for a second or even third time, such as Elinor Jane Moran, Richard Knight and Dan Roddick, who sing for a festive concert in December. A recital by James Gilchrist, one of the world's leading tenors, will provide a fitting end to the season before we break for the summer.

As we enter our second year there is a real sense of a strong and growing relationship between the performers and organisers and our audience. I hope you will join us as we continue to present the finest music-making 'in your own back yard'.

I would like to thank our wonderful team of concert ushers and helpers, who make the events run so smoothly, and very particularly the Concert Series Patrons, Spring and their managing director Erika Clegg, on whose generosity these concerts rely very heavily. We all owe Spring a huge debt of thanks for their patronage and publicity expertise.

I wish you all a thoroughly enjoyable season of music here in Southwold and look forward to sharing it with you.

**Nathan Williamson,  
Artistic Director**

[www.nathanwilliamson.co.uk](http://www.nathanwilliamson.co.uk)  
Southwold, July 2010

**HalfordWetmore**  
If you value your property  
you will value our experience.

To see our full range  
of properties visit  
[www.halfordwetmore.com](http://www.halfordwetmore.com)

**Tel: 01502 723007**

Craftfield House, 45 High Street, Southwold, Suffolk IP18 6DJ  
Fax: 011502 723317 Email: [info@halfordwetmore.com](mailto:info@halfordwetmore.com)

Estate Agents & Valuers

**FOR SALE**  
Southwold Office  
**01502 723007**  
[www.halfordwetmore.com](http://www.halfordwetmore.com)

*Southwold  
concert series*

## Spring

Spring is proud and delighted to be Patron of the Southwold Concert Series as it enters its second full season.

Last year the Series grew in popularity and reputation, with attendance creeping up into regular numbers of 200+, packing our pretty church with music lovers. With styles ranging from songs from the shows to fully staged opera, from award-winning soloists to enchanting groups, the wide variety of music was bound by an undeniable talent.

laurels, lulled by the beauty of our Southwold location - is shared by the Concert Series and we wish you all very enjoyable concert attendance this year.

**Erika Clegg, Managing Director**  
[www.springadvertising.co.uk](http://www.springadvertising.co.uk)  
July 2010

**Providing you with the very highest  
quality client care and legal advice**

**MANTINS**  
SOLICITORS & NOTARIES

- Notarial Services
- Wills
- Probate
- General Property Matters
- Residential and Commercial Conveyancing

82 High Street,  
Southwold,  
Suffolk IP18 6DP

Partners:  
Katie Mantin LLB  
& Greta Tancred

**01502 724750**  
[www.mantins.co.uk](http://www.mantins.co.uk)  
[enquiries@mantins.co.uk](mailto:enquiries@mantins.co.uk)

This year I wouldn't dream of missing the lively Christmas concert. Last year's was marked by its humour, wonderful singing and even some off-piste pew-clambering opera. I'm eagerly anticipating Njabulo Madlala's concert in May - and we are delighted that in 2011 the brilliant Barbirolli Quartet will be playing for the Series.

Spring is a full-service creative agency with clients across the country. We pride ourselves on offering work of the very highest quality, thinking with a big city agency mentality, and providing work that creates measurable results, irrespective of budget. This insistence on quality - and not resting on our



OUR JOURNEY BEGAN WITH A HANDFUL OF OUR OWN HOUSES, A WEALTH OF **MARKETING EXPERIENCE** AND A DESIRE TO PROVIDE AN EXCEPTIONAL BOOKING RATE **FOR PROPERTY OWNERS**. FOUR YEARS LATER, WE'RE LOOKING AFTER 100 **REMARKABLE PROPERTIES** AND DELIVERING **HIGH OCCUPANCY RATES** TO A BAND OF LOYAL CUSTOMERS. **JOIN US**.



PLEASE CALL **JIM HUK** ON **SOUTHWOLD 722448**  
OR VISIT **WWW.BESTOFSUFFOLK.CO.UK**

## Sponsors

The Patron of the concert series is Spring, who also donate design, marketing and box office.

4 Church Street, Southwold IP18 6JG  
01502 726 161

[www.springadvertising.co.uk](http://www.springadvertising.co.uk)

Thanks to Adnams for their generous support and our interval refreshments.

[www.adnams.co.uk](http://www.adnams.co.uk)

Foxtail Lily has kindly provided the beautiful flowers.

59 High St, Southwold, IP18 6DJ  
01502 723 761

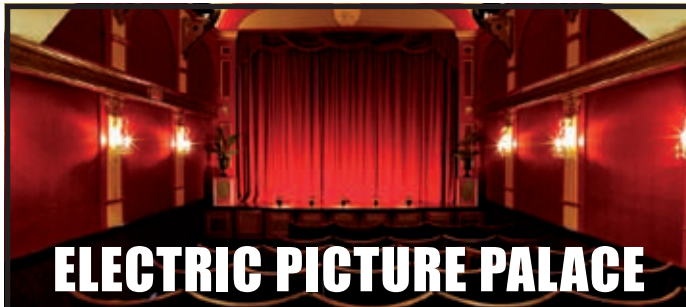
The Swan and The Crown will be giving 10% discount off bar meals and drinks to ticket holders.

The Swan, Market Place,  
Southwold IP18 6EG

The Crown, High Street,  
Southwold IP16 6DP  
01502 722 186

## Where to find us

All concerts are held in **St Edmund's Church, Southwold**



## ELECTRIC PICTURE PALACE

Southwold's award-winning 68 seat Electric Picture Palace shows an eclectic mix of films in four seasons each year.

Call the Box Office for more details.

**07815 769565**

Bookings: 01502 726 161 or [elizabeth.hirst@springadvertising.co.uk](mailto:elizabeth.hirst@springadvertising.co.uk)  
[www.southwoldconcertseries.co.uk](http://www.southwoldconcertseries.co.uk)



The Amsterdam Chamber Soloists

## Saturday September 11th 2010

7:30pm – The Amsterdam Chamber Soloists

**Tijmen Huisingh - violin**

**Anna-Magdalena den Herder - viola**

**Charles Watt - cello**

**Thomas Beijer - piano**

W. A. Mozart – Piano Quartet  
in E flat major, K.493

Joaquín Turina – Piano Quartet  
in A minor, op.67

Richard Strauss – Piano Quartet  
in C minor, op.13

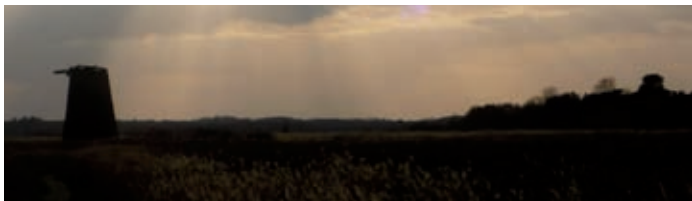
The Amsterdam Chamber Soloists are a new ensemble from Holland making their UK debut here in Southwold. Comprised of multi award winning musicians, since their debut in 2009 they have performed

at venues including the Amsterdam Concertgebouw and on Dutch Radio 4, presenting programmes of great variety, as reflected in this evening's choice of established classics and less familiar works of the chamber repertoire. This is a rare chance to see one of the finest new ensembles from overseas, surely destined for great things.

### Tickets

£12 including interval refreshments.

£17 including a pre-concert reception on Bartholomew Green.



Barbirolli Quartet

## Saturday October 23rd 2010

7:30pm – Barbirolli Quartet

**Rakhi Singh - violin**

**Katie Stillman - violin**

**Ella Brinch - viola**

**Ashok Klouda - cello**

Joseph Haydn – Quartet no.44  
in E major, op.54 no.3

Karol Szymanowski – Quartet no.2,  
op.56 (1927)

Nathan Williamson – String Quartet  
2010 (world premiere)

Felix Mendelssohn – Quartet no.6  
in F minor, op.80

The Barbirolli Quartet have a firmly established reputation as one of the UK's most brilliant young quartets, recently performing in Europe's leading concert halls under the European Concert Halls Organisation, and touring in Singapore, New Zealand and Australia. They have also given highly acclaimed debuts at London's Wigmore Hall and Purcell Room and hold a prestigious Chamber

Music Fellowship at London's Royal Academy of Music.

Their diverse repertoire and dynamic approach to performance is reflected in this rich and contrasting programme, balancing the classical, romantic and contemporary. They also give the premiere of a new work composed specially for them by series director Nathan Williamson.

*I'd rush to hear this superb quartet again, even if they were called the Cat's Pyjamas.*

Geoff Brown - The Times

### Tickets

£12 including interval refreshments.



Nathan Williamson Ellie Jane Moran Richard Knight Daniel Roddick

## Saturday December 4th 2010

7:30pm – Heart-Warming Festive Music

**Ellie Jane Moran - soprano**

**Richard Knight - tenor**

**Daniel Roddick - baritone**

**Nathan Williamson - piano**

Those who remember these three fabulous singers and their hilarious performance at last year's Christmas concert will not want to miss their return to Southwold this year, kicking off the season's festive mood in a fabulous evening of song and

merriment as part of the Christmas Lights Switch-On weekend.

Be prepared for scenes of opera, musical, Gilbert and Sullivan, cabaret and folksong, and occasionally joining in the choruses for one or two numbers!

### Tickets

£12 including interval refreshments.



Alexander Somov Nathan Williamson

## Saturday February 19th 2011

7:30pm – Somov and Williamson

**Alexander Somov - cello**

**Nathan Williamson - piano**

Igor Stravinsky – Suite Italienne

Benjamin Britten – Sonata in C, op.65

Nathan Williamson – Gestures (2007)

Frank Bridge – Two pieces

Dmitri Shostakovich – Sonata in D minor, op.40

Alexander Somov's career was launched in 1998 when he won the Guildhall School's prestigious Gold Medal, a prize whose previous recipients include Jacqueline du Pré, Tasmin Little and Bryn Terfel. Since then he has been dazzling audiences worldwide with his virtuosity and versatility, performing solo recitals and chamber music, and guest leading some of the world's leading orchestras.

He collaborates with series director Nathan Williamson in a programme solely of British and Russian music, ranging from the humour and dance of Britten and Stravinsky to the passionate outburst of Williamson's Gestures and the lyrical warmth of Shostakovich and Bridge.

### Tickets

£12 including interval refreshments.





Nathan Williamson

## Saturday April 9th 2011

7:30pm – Nathan Williamson

W. A. Mozart – Sonata in F major,  
K.332

Johannes Brahms – Piano pieces  
op.118

Franz Schubert – Sonata in A major,  
D.959

One of the UK's most individual young artists, Nathan Williamson is active as composer and pianist, giving regular performances of chamber music and select solo repertoire alongside his own and other contemporary repertoire.

He presents three highly diverse works within the Germanic classical tradition – from the humour of Mozart, the reflective shorter works of Brahms, and the ambitious and monumental late A major Sonata of Schubert, a deeply complex and ambitious work, completed just before his untimely death.



*Superbly musical and technically masterly. Such composure in the face of such daunting technical difficulties.*  
Bryce Morrison

### Tickets

£12 including interval refreshments.



Njabulo Madlala



Nathan Williamson

## Saturday May 28th 2011

7:30pm – Madlala and Williamson

**Njabulo Madlala - baritone**  
**Nathan Williamson - piano**

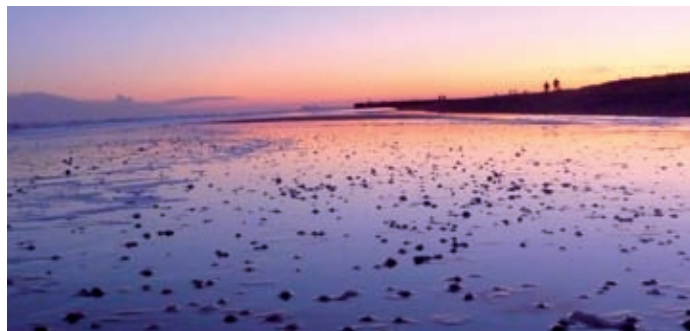
Works by Schubert, Schumann, Finzi, Vaughan Williams, and arrangements of South African folksong.

Njabulo comes from the Inanda township outside Durban, where he always dreamt that his voice could be 'my passport to the world'. He studied at the Guildhall School of Music and Drama, completing the post-graduate

opera course under Robert Dean. Aged just 28, he has appeared with several important opera companies, including Glyndebourne on Tour. Njabulo and series director Nathan Williamson have recently returned from collaborating at the International Performing Arts Festival in South Africa.

### Tickets

£12 including interval refreshments.





Alison Nicholls



James Gilchrist

## Friday July 8th 2011

7:30pm – Gilchrist and Nicholls

**James Gilchrist, tenor**  
**Alison Nicholls, harp**

Benjamin Britten - A Birthday Hansel  
(seven poems of Robert Burns)

Alec Roth (b.1948) - Romantic  
Residues (nine poems by  
Vikram Seth)

Nathan Williamson - New work,  
World Premiere

Nicola LeFanu (b.1947) - Alkman  
the Choirmaster (text by John Fuller)

Howard Skempton (b.1947) -  
Three songs for Jennie (setting  
Bromsgrove poets)

Maurice Ravel - Cinq mélodies  
populaires grecques (Five Greek  
folksongs)

Widely regarded as one of the world's  
leading tenors, James Gilchrist and  
regular duo partner Alison Nicholls  
conclude this season with a recital of  
great variety and creativity.

James began his working life as a  
doctor, turning to a full-time career in  
music in 1996. He and Alison have  
enjoyed a steady stream of new  
works composed specially for them,  
some of which they perform here  
alongside delightful classics by Britten  
and Ravel.

*He is now unsurpassed among  
lyric tenors in sweetness and  
technical security, and for his musical  
intelligence.*  
The Independent

### Tickets

£12 including interval refreshments.

£17 including a pre-concert reception  
on Bartholomew Green.



## Friends and Patrons of the Southwold Concert Series

We are extremely grateful for  
donations from our supporters,  
which provide the financial footing  
needed to engage the finest young  
performers and help us plan with  
confidence for future events. Our  
supporters gain special privileges in  
return for their assistance:

**Friends** £25 (£45 for a couple):  
priority reserved seating, twice-yearly  
newsletter with advance details of  
events, updates and special offers.

**Associates** £50 (£90 for a couple):  
Friends' benefits plus 15% off your  
ticket for concerts, acknowledgement  
in programmes and cushions in your  
reserved pew.

**Benefactors** donations of £250  
and above: Associates' privileges  
plus two complimentary tickets to an  
event of your choice, opportunities to  
meet performers at receptions, and a  
personal ticketing service for  
your convenience.

For more information, or to become  
a supporter, please contact the box  
office or, alternatively, fill in and return  
the form below with your donation.  
More details are also available on  
our website.

[www.nathanwilliamson.co.uk](http://www.nathanwilliamson.co.uk)  
[www.southwoldconcertseries.co.uk](http://www.southwoldconcertseries.co.uk)

### Become a supporter

Name .....

Address .....

.....

.....

Email .....

**Friend** (£25)  **Associate** (£50)  **Benefactor** (£250)

Please make cheques payable to 'Southwold Concert Series' and send to  
Spring Advertising, 4 Church Street, Southwold, IP18 6JG

# Enjoy a real taste of SOUTHWOLD.



**ADNAM'S**  
SOUTHWOLD

There's something about Southwold that gives you a taste for all things Adnams.

Firstly the beer – Southwold's finest – which you can enjoy in our friendly pubs. But there's much more. For a taste of local life, stay at one of our hotels and treat yourself to a delicious three course meal. And have a taste or two of our range of hand-picked wines from all over the world at our Cellar & Kitchen store (you can even pick up some tasteful designer kitchenware).

Come and visit us at [adnams.co.uk](http://adnams.co.uk)  
or to book a hotel room, call 01502 722186

You can find Adnams Cellar & Kitchen stores in Southwold, Woodbridge, Hadleigh, Harleston, Holkham, Holt, Stamford, Saffron Walden and Richmond.